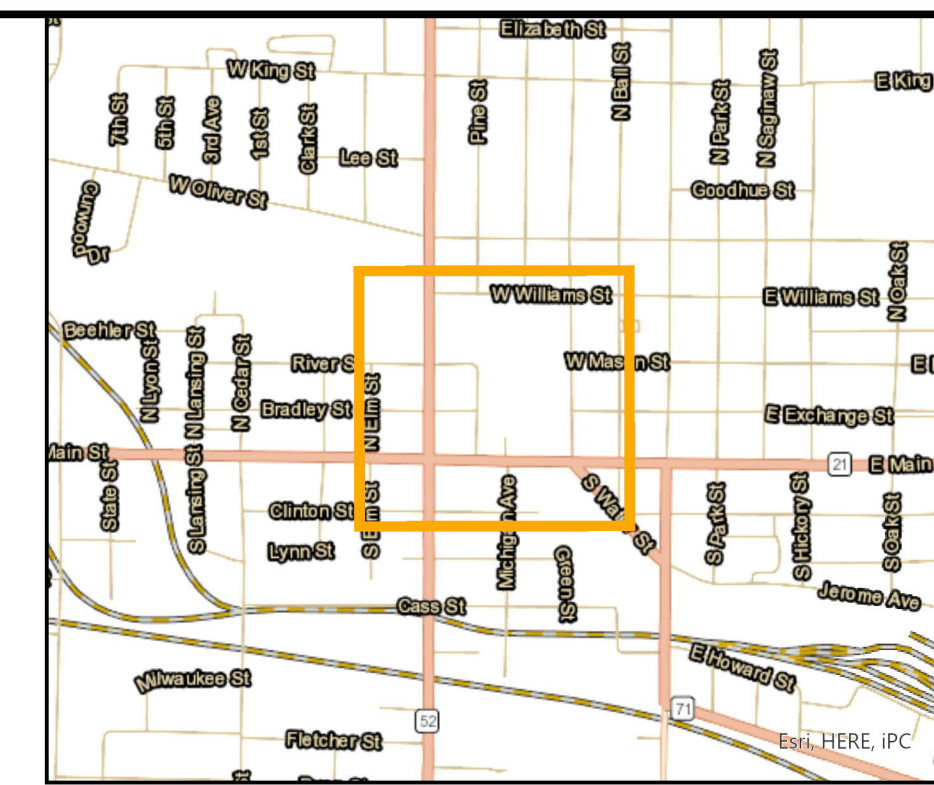
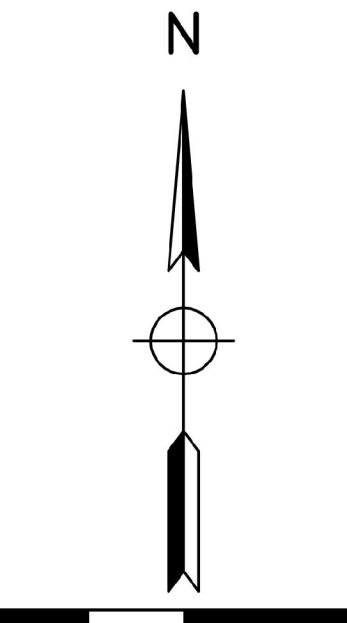


SHIAWASSEE RIVER AT OWOSSO MIDDLE SCHOOL SHIAWASSEE COUNTY, MICHIGAN



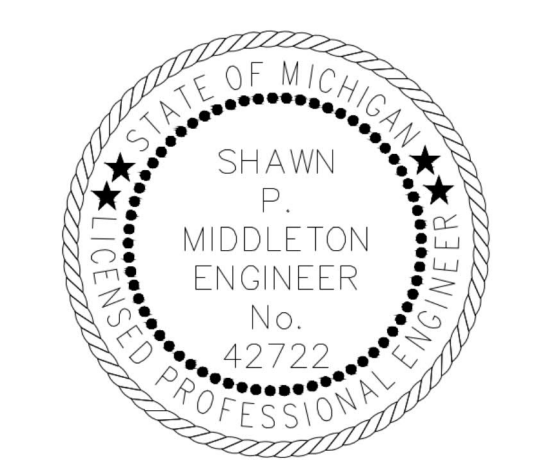
AREA MAP
NOT TO SCALE



LEGEND

- River Profile
- FIS Cross Sections
- Proposed Cross Sections
- Effective Floodway
- Effective 100 Year Floodplain
- Effective 500 Year Floodplain
- Proposed Floodway
- Proposed 100-YR Floodplain
- Proposed 500-YR Floodplain

PLEASE NOTE THAT THE MAP REVISIONS SHOWN ARE CURRENTLY UNDER REVIEW BY FEMA AND ARE SUBJECT TO CHANGE



CONTOURS FROM 2015 LIDAR (NAV/D8)

BY MARK REVISIONS DATE
THE WORK REPRESENTED BY THIS DRAWING WAS DESIGNED BY THE ENGINEER FOR THIS SPECIFIC APPLICATION AND SPECIFIC LOCATION DESCRIBED HEREIN IN ACCORDANCE WITH THE CONDITIONS PREVALENT AT THE TIME THE DESIGN WAS DONE. THE ENGINEER DOES NOT GUARANTEE AND WILL NOT BE LIABLE FOR ANY OTHER LOCATION, CONDITION, DESIGN OR PURPOSE.

LETTER OF MAP REVISION REQUEST
OWOSSO MIDDLE SCHOOL
SHIAWASSEE COUNTY, MICHIGAN

WORKING
TOPOGRAPHIC
MAP



ST. JOHNS OFFICE
1400 Zeeb Drive
St. Johns, MI 48879
Tel. 989-224-2355
www.SpicerGroup.com

DE. BY: KMB CH. BY: SPM PROJECT NO. 128474SG2020
DR. BY: KMB APP. BY: SPM
STDS. SHEET 1 OF 1 DR
DATE: NOVEMBER 2021 FILE NO. 1
SCALE: 1"=88'

PATH: C:\USERS\KAYLA_COSBY\DRAWINGS\OWOSSO MIDDLE SCHOOL\OWOSSO MIDDLE SCHOOL\OWOSSO MIDDLE SCHOOL.dwg, PRINTED ON: 11/22/2021, BY: KAYLA_COSBY